

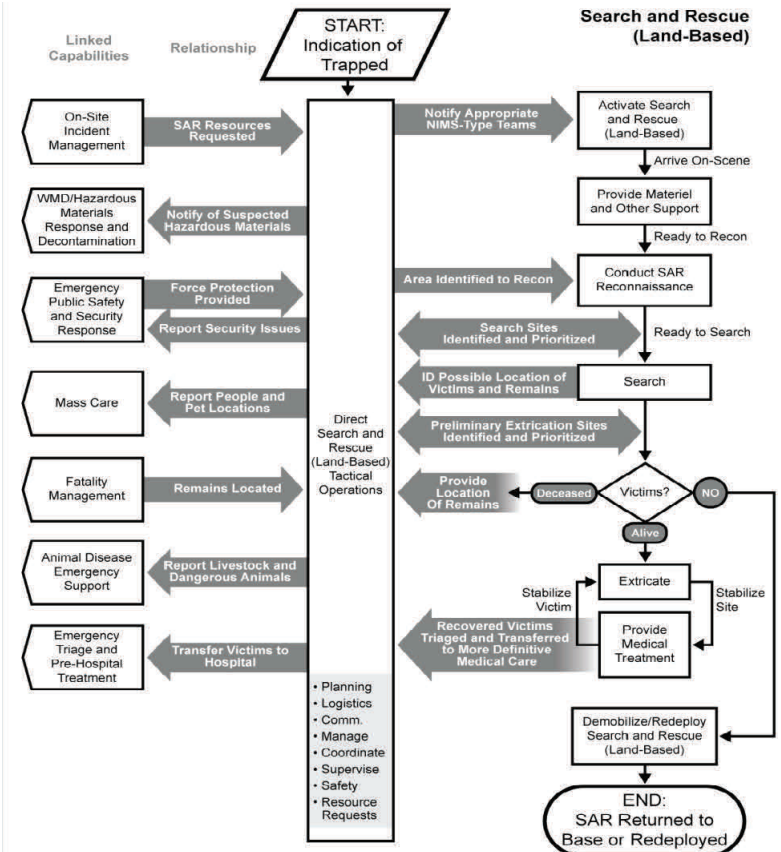
Activation Triggers

- Local resources are overwhelmed and there is a need for a coordinated regional search and rescue (SAR) response.
- Any incident involving improvised explosive device (IED) or conventional explosive device, where local resources require SAR capabilities.
- Any incident requiring the need for a coordinated regional SAR response.
- Any incident requiring advanced search and rescue personnel and resources.
- Significant structural or infrastructure damage requiring advanced resources to conduct search and rescue operations outside of the jurisdictions capabilities or to augment capabilities.

How to Activate this CONOPS

The following are the critical tasks the SAR Team Lead should coordinate to activate IED SAR operations:

- Ensure that effective coordination, interaction, and reporting occur in the Operations Section throughout the course of the mission.
- Encourage and help initiate Unified Command (UC) for tactical operations, as required.
- Coordinate closely with the sponsoring agencies' chiefs to develop a common operating picture and incident situation.
- Review and develop the need for additional tactical resources or support requirements as required for incident operations. Requests will be filled using the appropriate regional resource procurement process as identified in the Multi-Agency Coordination Center (MACC) Plan.



Operational Considerations

- Each position on the organizational chart has a corresponding critical task list.
- A UC approach is taken to local incident command because of the nature of the response involving SAR.
- The establishment of control and security at the incident scene and the areas used to treat victims is priority.
- SAR resources should be activated in a timely manner due to increased response times.

- Search and rescue objectives:**
- Integrate SAR within Incident Command (IC).
 - Request resources based on need.
 - Establish and maintain personnel accountability systems, providing for the health and safety of responders to include alternate work/rest cycles.
 - Coordinate victim care and transport to a collection or triage point.
 - Establish staging areas and bases of operations.
 - Coordinate air operations assets to support the mission.
 - Coordinate debris management to facilitate search and rescue actions.
 - Demobilize search and rescue operations and, if necessary, transition to search and recovery operations.

RCPI Plan Integration

MACC	X
CMIS	X
HURR-SAR	
AMOPS	X
CMOC	X
RNEMR	X
PHCF	
MFM	X
RECP	
TMC-FLU	
SWI	X

Communications Considerations

- The IC determines when to use national calling (NIFOG) and tactical channels.
- All personnel will follow the Incident Command System (ICS)/National Incident Management System (NIMS) structure.
- Involves us of current jurisdiction's communication infrastructure.
- Adherence to Regional Interoperability Communication Plan or Statewide Interoperability Channel Plan.
- Telephonic and computer connectivity is needed to support SAR operations.
- Regional Communication Advisory Group will oversee voice communications during steady state.